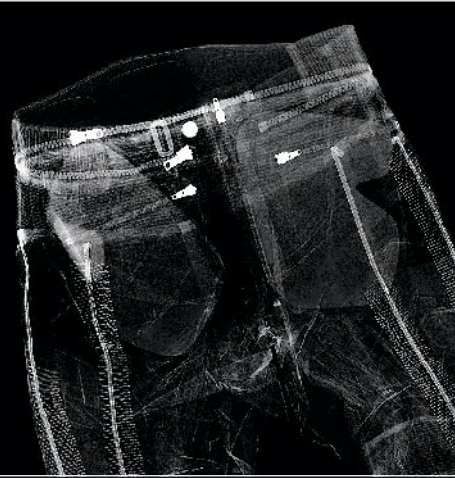


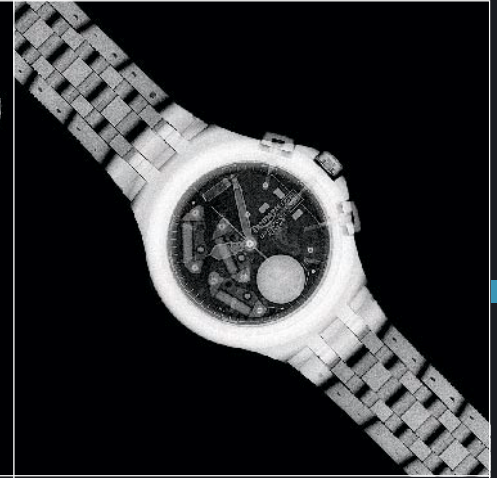
■ LEATHERWEAR



■ OUTERWEAR



■ GLOVES & BOOTS



■ PERSONAL ACCESSORIES



Triumph leatherwear. Tailored to fit, engineered to perform.



Velocity Two Piece Suit

RANGE	UK/USA	EURO	CODE
JACKET, MEN'S	38	48	M2193801
	40	50	M2194001
	42	52	M2194201
	44	54	M2194401
	46	56	M2194601
	48	58	M2194801
JEANS, MEN'S	30	30	M2203001
	32	32	M2203201
	34	34	M2203401
	36	36	M2203601
	38	38	M2203801
	40	40	M2204001
JACKET, LADIES'	42	42	M2204201
	XS	XS	M2190001
	S	S	M2190101
	M	M	M2190201
JEANS, LADIES'	L	L	M2190301
	XS	XS	M2200001
	S	S	M2200101
	M	M	M2200201
	L	L	M2200301

- 1.2mm cowhide
- Easily removable CE 95 protectors – shoulder, elbow and knee
- Removable dual density full back insert
- Double leather panels – seat, elbow, shoulder and knee
- Double stitched impact seams
- Hard carbon weave shoulder and knee panels
- Internal moulded panels
- Keprotec® stretch panels
- 3M® night reflective piping
- Velcro attached knee sliders
- Mesh lining
- Jacket and Jeans available separately



Redline Leather Jacket

RANGE	UK/USA	EURO	CODE
MEN'S, BLUE	38	48	M9530503
	40	50	M9530603
	42	52	M9530703
	44	54	M9530803
	46	56	M9530903
	48	58	M9531003
MEN'S, RED	50	60	M9531103
	52	62	M9531203
	38	48	M9532503
	40	50	M9532603
	42	52	M9532703
	44	54	M9532803
	46	56	M9532903

MEN'S, RED	48	58	M9533003
	50	60	M9533103
	52	62	M9533203
LADIES', BLUE	XS	XS	M9530003
	S	S	M9530103
	M	M	M9530203
LADIES', RED	L	L	M9530303
	2L	2L	M9530403
	XS	XS	M9532003
	S	S	M9532103
	M	M	M9532203
	L	L	M9532303
	2L	2L	M9532403

- 1.2mm cowhide
- Double stitched impact seams
- Easily removable CE 95 protectors – shoulder and elbow
- Dual density back inserts
- 3M® night reflective piping – back
- Hidden ventilation panels within pockets
- Waist connection zipper supplied
- Option to fit fleece neck warmer
- Available in ladies' sizes



Stealth Jacket			
RANGE	UK/USA	EURO	CODE
MEN'S, BLACK	38	48	M9920000
	40	50	M9920100
	42	52	M9920200
	44	54	M9920300
	46	56	M9920400
	48	58	M9920500
	50	60	M9920600
	52	62	M9920700
	54	64	M9920800
	56	56	M9920900

- 1.2mm cowhide
- Carbon look leather
- Easily removable CE 95 protectors – shoulder and elbow
- Dual density back insert
- Removable aluminium windproof liner
- Removable fleece neck warmer
- Hidden ventilation panels
- Waist connection zipper supplied



Retro Jacket			
RANGE	UK/USA	EURO	CODE
MEN'S, RED	38	48	M9563898
	40	50	M9564098
	42	52	M9564298
	44	54	M9564498
	46	56	M9564698
	48	58	M9564898
	50	60	M9565098
	52	62	M9565298
	54	64	M9565498
	56	66	M9565698

- 1.2mm cowhide
- Easily removable hard cup inserts – shoulder and elbow
- Double stitched impact seams
- Adjustable waistband
- Waist connection zipper supplied



Café Racer Jacket			
RANGE	UK/USA	EURO	CODE
MEN'S, GUN	38	48	M2323802
	40	50	M2324002
	42	52	M2324202
	44	54	M2324402
	46	56	M2324602
	48	58	M2324802
	50	60	M2325002
	52	62	M2325202
	54	64	M2325402
	56	66	M2325602
MEN'S, CASPIAN	38	48	M2333802
	40	50	M2334002
	42	52	M2334202
	44	54	M2334402



Ladies' Café Racer Jacket			
RANGE	UK/USA	EURO	CODE
LADIES', GUN	38	48	M2323802
	40	50	M2324002
	42	52	M2324202
	44	54	M2324402
	46	56	M2324602
	48	58	M2324802
	50	60	M2325002
	52	62	M2325202
	54	64	M2325402
	56	66	M2325602
MEN'S, CASPIAN	38	48	M2333802
	40	50	M2334002
	42	52	M2334202
	44	54	M2334402

Ladies' Café Racer Jacket			
RANGE	UK/USA	EURO	CODE
LADIES', CASPIAN	38	48	M2333802
	40	50	M2334002
	42	52	M2334202
	44	54	M2334402
	46	56	M2334602
	48	58	M2334802
	50	60	M2335002
	52	62	M2335202
	54	64	M2335402
	56	66	M2335602
LADIES', GUN	XS	XS	M2320102
	S	S	M2320202
	M	M	M2320302
	L	L	M2320402
	2L	2L	M2320502
LADIES', CASPIAN	XS	XS	M2330102
	S	S	M2330202
	M	M	M2330302

- 1.2mm cowhide
- Removable CE 95 protectors – shoulder and elbow
- Double stitched impact seams
- Hidden ventilation panels within pockets
- Waist connection zipper supplied
- Option to fit fleece neck warmer
- Available in ladies' sizes



Pioneer Jacket				
RANGE	UK/USA	EURO	CODE	
MEN'S, BLACK	38	48	M9953800	
	40	50	M9954000	
	42	52	M9954200	
	44	54	M9954400	
	46	56	M9954600	
	48	58	M9954800	
	50	60	M9955000	
	52	62	M9955200	
	54	64	M9955400	
	56	66	M9955600	

- 1.2mm cowhide
- CE 95 approved protectors – shoulder and elbow
- Brass zippers and fasteners
- Hidden ventilation panel – chest and back
- Double stitched impact seams
- Mesh lining
- Waist connection zipper supplied
- Option to fit fleece neck warmer



Urban Leather Jacket				
RANGE	UK/USA	EURO	CODE	
MEN'S, BLUE	38	48	M2213801	
	40	50	M2214001	
	42	52	M2214201	
	44	54	M2214401	
	46	56	M2214601	
	48	58	M2214801	
	50	60	M2215001	
	52	62	M2215201	
	54	64	M2215401	
	56	66	M2215601	
MEN'S, GREY	38	48	M2223801	
	40	50	M2224001	
	42	52	M2224201	
	44	54	M2224401	
	46	56	M2224601	
	48	58	M2224801	
	50	60	M2225001	
	52	62	M2225201	
	54	64	M2225401	
	56	66	M2225601	

- 1.2mm cowhide
- Easily removable CE 95 protectors – shoulder and elbow
- Double stitched impact seams
- 3M® night reflective piping
- Waist connection zipper supplied
- Option to fit fleece neck warmer



Speedking Leather Jacket				
RANGE	UK/USA	EURO	CODE	
MEN'S, GREY	38	48	M9540503	
	40	50	M9540603	
	42	52	M9540703	
	44	54	M9540803	
	46	56	M9540903	
	48	58	M9541003	
	50	60	M9541103	
	52	62	M9541203	
	38	48	M9544503	
	40	50	M9544603	
	42	52	M9544703	
	44	54	M9544803	
	46	56	M9544903	
	48	58	M9545003	
	50	60	M9545103	
	52	62	M9545203	
MEN'S, YELLOW	38	48	M9546503	
	40	50	M9546603	



MEN'S, YELLOW	42	52	M9546703	
	44	54	M9546803	
	46	56	M9546903	
	48	58	M9547003	
	50	60	M9547103	
	52	62	M9547203	
	38	48	M9542503	
	40	50	M9542603	
	42	52	M9542703	
	44	54	M9542803	
	46	56	M9542903	
	48	58	M9543003	
	50	60	M9543103	
	52	62	M9543203	
	XS	XS	M9540003	
	S	S	M9540103	
LADIES', GREY	M	M	M9540203	
	L	L	M9540303	



LADIES', GREY	2L	2L	M9540403	
LADIES', RED	XS	XS	M9544003	
	S	S	M9544103	
	M	M	M9544203	
	L	L	M9544303	
	2L	2L	M9544403	
	XS	XS	M9546003	
LADIES', YELLOW	S	S	M9546103	
	M	M	M9546203	
	L	L	M9546303	
	2L	2L	M9546403	
	XS	XS	M9542003	
LADIES', BLUE	S	S	M9542103	
	M	M	M9542203	
	L	L	M9542303	
	2L	2L	M9542403	

- 1.2mm cowhide
- Double stitched impact seams
- Easily removable CE 95 protectors – shoulder and elbow
- Dual density back inserts
- 3M® night reflective piping – back
- Chest pocket ventilation panels
- Waist connection zipper supplied
- Option to fit fleece neck warmer
- Available in ladies' sizes





Raptor Leather Jacket				
RANGE	UK/USA	EURO	CODE	
MEN'S, BLACK	38	48	M2303802	
	40	50	M2304002	
	42	52	M2304202	
	44	54	M2304402	
	46	56	M2304602	
	48	58	M2304802	
	50	60	M2305002	
	52	62	M2305202	
	54	64	M2305402	
	56	66	M2305602	

- 1.2mm cowhide
- Fully perforated leather panels
- Removable CE 95 protectors – shoulder and elbow
- Dual density back insert
- Double stitched impact seams
- 3M® night reflective piping
- Mesh lining
- Waist connection zipper supplied



Curzon Leather Jacket			
RANGE	UK/ USA	EURO	CODE
MEN'S, BLACK	38	48	M9513803
	40	50	M9514003
	42	52	M9514203
	44	54	M9514403
	46	56	M9514603
	48	58	M9514803
	50	60	M9515003
	52	62	M9515203
LADIES', BLACK	XS	XS	M9510003
	S	S	M9510103
	M	M	M9510203
	L	L	M9510303
	2L	2L	M9510403

- Soft 1mm cowhide
- Double stitched impact seams
- Easily removable CE 95 protectors – shoulder and elbow
- Exposed zip detailing
- Keprotec® stretch panels – underarm
- Coloured fixed lining
- Chest pocket ventilation panels
- Waist connection zipper supplied
- Option to fit fleece neck warmer
- Available in ladies' sizes



Classic Leather Jacket				
RANGE	UK/USA	EURO	CODE	
MEN'S, BLACK	38	48	M9173802	
	40	50	M9174002	
	42	52	M9174202	
	44	54	M9174402	
	46	56	M9174602	
	48	58	M9174802	
	50	60	M9175002	
	52	62	M9175202	
	54	64	M9175402	
	56	66	M9175602	

- 1.2mm waterproof cowhide
- Pockets for protectors
- Waist connection zipper supplied
- Option to fit fleece neck warmer



Highway Jacket				
RANGE	UK/USA	EURO	CODE	
MEN'S, BLACK	38	48	M2130400	
	40	50	M2130500	
	42	52	M2130600	
	44	54	M2130700	
	46	56	M2130800	
	48	58	M2130900	
	50	60	M2131000	
	52	62	M2131100	
	54	64	M2131200	
	56	66	M2131300	
	LADIES', BLACK	XS	M2130000	
		S	M2130100	
		M	M2130200	
		L	M2130300	



- 1.2mm cowhide
- Removable aluminium windproof liner
- Hidden ventilation panels
- Easily removable CE 95 protectors – shoulder and elbow
- Double stitched impact seams
- Mesh lining
- Waist connection zipper supplied



Leather Bomber Jacket				
RANGE	UK/USA	EURO	CODE	
MEN'S, BLACK	38	48	M9573803	
	40	50	M9574003	
	42	52	M9574203	
	44	54	M9574403	
	46	56	M9574603	
	48	58	M9574803	
	50	60	M9575003	
	52	62	M9575203	
	54	64	M9575403	
	56	66	M9575603	

- 1.2mm cowhide
- Easily removable CE 95 protectors
- Hidden ventilation panels – chest, arm and back
- Removable aluminium liner
- Waist connection zipper supplied
- Option to fit fleece neck warmer



5 Pocket Leather Jeans

RANGE	UK/USA	EURO	CODE
MEN'S, BLACK SHORT	30	30	M2310002
	32	32	M2310102
	34	34	M2310202
	36	36	M2310302
	38	38	M2310402
	40	40	M2310502
	42	42	M2310602
MEN'S, BLACK REGULAR	30	30	M2311002
	32	32	M2311102
	34	34	M2311202
	36	36	M2311302
	38	38	M2311402
	40	40	M2311502
	42	42	M2311602
LADIES, BLACK	XS	XS	M2312002
	S	S	M2312102
	M	M	M2312202
	L	L	M2312302
	2L	2L	M2312402

- 1.2mm cowhide
- Removable CE 95 approved protectors – knee
- Double stitched impact seams
- Hidden Cordura® reinforced seat
- Two leg lengths



Ladies Jeans 2

RANGE	UK/USA	EURO	CODE
LADIES', BLACK	XS	XS	M9160003
	S	S	M9160103
	M	M	M9160203
	L	L	M9160303
	2L	2L	M9160403

- 1.2mm cowhide
- Double leather seat and knee panels
- Easily removable CE 95 protectors – knee and shin
- Leather stretch panels – knee and back
- Stretch Cordura® panels – calf
- Stretch Keypotec® panels – thigh
- Waist connection zipper supplied



Classic Jeans 2

RANGE	UK/USA	EURO	CODE
MEN'S, BLACK	30	30	M9133003
	32	32	M9133203
	34	34	M9133403
	36	36	M9133603
	38	38	M9133803
	40	40	M9134003
	42	42	M9134203

- 1.2mm cowhide
- Double leather seat and knee panels
- Easily removable CE 95 protectors – knee and shin
- Leather stretch panels – thigh, back and knee
- Stretch Cordura® panels – calf
- Waist connection zipper supplied



Classic Perforated Jeans 2

RANGE	UK/USA	EURO	CODE
MEN'S, BLACK	30	30	M9143003
	32	32	M9143203
	34	34	M9143403
	36	36	M9143603
	38	38	M9143803
	40	40	M9144003
	42	42	M9144203

- Fully perforated version of the Classic Jeans 2
- Full double leather seat and knee



New Sport Jeans

RANGE	UK/USA	EURO	CODE
MEN'S, BLACK	30	30	M2283002
	32	32	M2283202
	34	34	M2283402
	36	36	M2283602
	38	38	M2283802
	40	40	M2284002

- 1.2mm cowhide
- Removable CE 95 approved protectors – knee
- Double leather panels – seat, knee and thigh
- Keypotec® stretch panels
- Double stitched impact seams
- 3M® night reflective fabric
- Hip padding
- Velcro attached knee sliders
- Waist connection zipper supplied
- Mesh lining



New Sport Perforated Jeans

RANGE	UK/USA	EURO	CODE
MEN'S, BLACK	30	30	M2293002
	32	32	M2293202
	34	34	M2293402
	36	36	M2293602
	38	38	M2293802
	40	40	M2294002

- Perforated leather version
- Solid leather panels – seat and knee
- Mesh lining



Triumph Outerwear, made to protect, in every environment.
Innovation, practicality and ease of use are key features of every Triumph waterproof garment.



Sympatex® Evolution Jacket

RANGE	SIZE	CODE			
MEN'S, BLACK	XS	M2110001	MEN'S, YELLOW	L	M2113301
	S	M2110101		XL	M2113401
	M	M2110201		XXL	M2113501
	L	M2110301		XS	M2112001
	XL	M2110401		S	M2112101
MEN'S, BLUE	XXL	M2110501		M	M2112201
	XS	M2111001		L	M2112301
	S	M2111101		XL	M2112401
	M	M2111201		XXL	M2112501
	L	M2111301	LADIES', BLACK	XS	M2114001
MEN'S, YELLOW	XL	M2111401		S	M2114101
	XXL	M2111501		M	M2114201
	XS	M2113001		L	M2114301
	S	M2113101		2L	M2114401
	M	M2113201		XS	M2115001
MEN'S, RED	XS	M2115101	LADIES', BLUE	S	M2115201
	S	M2115201		M	M2115301
	M	M2115301		2L	M2115401
	L	M2115401		XS	M2117001
	XL	M2117001		S	M2117101
LADIES', YELLOW	XXL	M2117201		M	M2117201
	XS	M2117301		L	M2117301
	S	M2117401		2L	M2117401
	M	M2116001	LADIES', RED	XS	M2116001
	L	M2116101		S	M2116101
	2L	M2116201		M	M2116201
	XS	M2116301		L	M2116301
	S	M2116401		2L	M2116401

- Waterproof, breathable and windproof
- Hiten® water repellent outer fabric
- Hidden ventilation panels
- Removable Sympatex® laminated fleece
- Reversible casual garment fleece
- Removable CE 95 approved protectors – shoulder and elbow
- Removable dual density back insert
- Sleeve width adjusters
- 3M® night reflective tape – chest, back and sleeves
- 3 exterior pockets
- Skin friendly collar
- Waist connection zipper supplied
- Option to fit a fleece neck warmer
- Available in ladies' sizes



Sympatex® Voyager Jacket

RANGE	SIZE	CODE	
MEN'S, BLUE	XS	M2020003	<ul style="list-style-type: none">• Removable dual density back insert• 3M® night reflective tape and badge – chest and back• 4 large capacity waterproof pockets – chest and waist• Adjustable waist belt• Waterproof rear glove storage pocket• Removable quilted liner• Skin friendly collar• Neck width adjuster• Option to fit fleece neck warmer• Waist connection zipper supplied
	S	M2020103	
	M	M2020203	
	L	M2020303	
	XL	M2020403	
	XXL	M2020503	<ul style="list-style-type: none">• Waterproof, breathable and windproof• Heavy duty Hiten® water repellent two-tone fabric• Double stitched impact seams• Easily removable CE 95 protectors – shoulder and elbow
	XXXL	M2020603	





Sympatex® Evolution Paddock Jacket

RANGE	SIZE	CODE
UNISEX, YELLOW	XS	M2123001
	S	M2123101
	M	M2123201
	L	M2123301
	XL	M2123401
UNISEX, RED	XXL	M2123501
	XS	M2122001
	S	M2122101
	M	M2122201
	L	M2122301
	XL	M2122401
	XXL	M2122501

UNISEX, BLACK	XS	M2120001
	S	M2120101
	M	M2120201
	L	M2120301
	XL	M2120401
UNISEX, BLUE	XXL	M2120501
	XS	M2121001
	S	M2121101
	M	M2121201
	L	M2121301
	XL	M2121401
	XXL	M2121501

- Waterproof, breathable and windproof
- Hiten® water repellent outer fabric
- Hidden ventilation panels
- Removable Sympatex® laminated fleece
- Reversible casual garment fleece
- Removable CE 95 approved protectors – shoulder and elbow
- Removable dual density back insert
- Sleeve width adjusters
- 3M® night reflective tape – chest, back and sleeves
- 2 exterior pockets
- Skin friendly collar

- Waist connection zipper supplied
- Option to fit fleece neck warmer



Sympatex® Expedition Jacket

RANGE	SIZE	CODE
MEN'S, RED	XS	M2092001
	S	M2092101
	M	M2092201
	L	M2092301
	XL	M2092401
MEN'S, BLACK	XXL	M2092501
	XS	M2090001
	S	M2090101
	M	M2090201
	L	M2090301
	XL	M2090401
	XXL	M2090501
MEN'S, BLUE	XS	M2091001
	S	M2091101
	M	M2091201

MEN'S, BLUE	L	M2091301
	XL	M2091401
	XXL	M2091501
MEN'S, YELLOW	XS	M2093001
	S	M2093101
	M	M2093201
	L	M2093301
	XL	M2093401
	XXL	M2093501
LADIES', RED	XS	M2096001
	S	M2096101
	M	M2096201
	L	M2096301
	2L	M2096401
LADIES', BLACK	XS	M2094001

LADIES', BLACK	S	M2094101
	M	M2094201
	L	M2094301
	2L	M2094401
LADIES', BLUE	XS	M2095001
	S	M2095101
	M	M2095201
	L	M2095301
	2L	M2095401
LADIES', YELLOW	XS	M2097001
	S	M2097101
	M	M2097201
	L	M2097301
	2L	M2097401

- Waterproof, breathable and windproof
- Cordura® and Hiten® water repellent outer fabric
- Removable quilted liner
- Removable CE 95 approved protectors – shoulder and elbow
- Removable dual density back insert
- Sleeve width adjusters
- 3M® night reflective material and tape
- Waist connection zipper supplied
- Option to fit fleece neck warmer
- Available in ladies' sizes

**Chevron Oversuit**

RANGE	SIZE	CODE
UNISEX, BLACK	XS	M9990100
	S	M9990200
	M	M9990300
	L	M9990400
	XL	M9990500
UNISEX, RED	XXL	M9990600
	XS	M9991100
	S	M9991200
	M	M9991300
	L	M9991400
UNISEX, YELLOW	XL	M9991500
	XXL	M9991600
	XS	M9992100
	S	M9992200
	M	M9992300
	L	M9992400
	XL	M9992500
	XXL	M9992600

- Waterproof nylon fabric
- Step in/ Step out design
- Two full length zippers
- 3M® night reflective chevron shoulder design
- 3M® night reflective slash back stripe
- 2 chest pockets
- 2 thigh pockets
- Bumbag for storage

**Tornado Jacket**

RANGE	UK/ USA	EURO	CODE
MEN'S, BLACK	38	48	M9183802
	40	50	M9184002
	42	52	M9184202
	44	54	M9184402
	46	56	M9184602
	48	58	M9184802
	50	60	M9185002
	52	62	M9185202

- Waterproof, breathable and windproof
- Hitena® water repellent outer fabric
- Removable CE 95 protectors
- Removable dual density back insert
- Sleeve width adjusters
- 3M® night reflective piping and tape
- Skin friendly collar
- Waist connection zipper supplied
- Option to fit fleece neck warmer

Retro Paddock Jacket

RANGE	SIZE	CODE
UNISEX, RED	S	M9740199
	M	M9740299
	L	M9740399
	XL	M9740499
	XXL	M9740599

- Cordura® water repellent outer fabric
- Removable quilted liner
- Removable CE 95 approved protectors – shoulder and elbow
- Hidden ventilation panels – arms and back
- Mesh lining
- Waist connection zipper supplied

Waterproof Redline Jacket

RANGE	UK/ USA	EURO	CODE
MEN'S, BLUE	38	48	M2630503
	40	50	M2630603
	42	52	M2630703
	44	54	M2630803
	46	56	M2630903
	48	58	M2631003
	50	60	M2631103
	52	62	M2631203
LADIES', BLUE	XS	XS	M2630003
	S	S	M2630103
	M	M	M2630203
	L	L	M2630303
MEN'S, GREY	2L	2L	M2630403
	38	48	M2632503
	40	50	M2632603
	42	52	M2632703
	44	54	M2632803
	46	56	M2632903

MEN'S, GREY	48	58	M2633003
	50	60	M2633103
	52	62	M2633203
LADIES', GREY	XS	XS	M2632003
	S	S	M2632103
	M	M	M2632203
	L	L	M2632303
	2L	2L	M2632403

- Waterproof, breathable and windproof
- Leather and Cordura® construction
- Water repellent outer fabric
- Double stitched impact seams
- 3M® night reflective piping – front and back
- Removable CE 95 protectors
- Option to fit fleece neck warmer
- Waist connection zipper supplied



Falcon Jacket			
RANGE	UK/ USA	EURO	CODE
MEN'S, YELLOW	38	48	M9983800
	40	50	M9984000
	42	52	M9984200
	44	54	M9984400
	46	56	M9984600
	48	58	M9984800
	50	60	M9985000
MEN'S, GREY	52	62	M9985200
	38	48	M9973800
	40	50	M9974000
	42	52	M9974200
	44	54	M9974400
	46	56	M9974600
	48	58	M9974800

MEN'S, GREY

5060

M9975000

5262

M9975200

• Leather and Cordura® construction

• Removable quilted liner

• Removable CE 95 approved protectors – shoulder and elbow

• Mesh lining

• Waist connection zipper supplied

Summer Blouson		
RANGE	SIZE	CODE
UNISEX, BLACK	S	M9221098
	M	M9221198
	L	M9221298
	XL	M9221398
	XXL	M9221498

• Nylon water repellent outer fabric

• Hidden ventilation panels

• Mesh lining

• Removable sleeves

New Paddock Jacket		
RANGE	SIZE	CODE
UNISEX, BLACK	S	M9221598
	M	M9221698
	L	M9221798
	XL	M9221898
	XXL	M9221998

• Cordura® water repellent outer fabric

• Quilted lining

• Removable sleeves

• Pockets for protectors



Waterproof Speedking Jacket			
RANGE	UK/ USA	EURO	CODE
MEN'S, BLUE	38	48	M2642503
	40	50	M2642603
	42	52	M2642703
	44	54	M2642803
	46	56	M2642903
	48	58	M2643003
	50	60	M2643103
LADIES', BLUE	52	62	M2643203
	XS	XS	M2642003
	S	S	M2642103
	M	M	M2642203
	L	L	M2642303
	2L	2L	M2642403
	38	48	M2644503
MEN'S, RED	40	50	M2644603
	42	52	M2644703
	44	54	M2644803
	46	56	M2644903
	48	58	M2645003
	50	60	M2645103
	52	62	M2645203

MEN'S, RED	44	54	M2644803
	46	56	M2644903
	48	58	M2645003
	50	60	M2645103
	52	62	M2645203
	XS	XS	M2644003
	S	S	M2644103
LADIES', RED	M	M	M2644203
	L	L	M2644303
	2L	2L	M2644404
	38	48	M2646503
	40	50	M2646603
	42	52	M2646703
	44	54	M2646803
MEN'S, YELLOW	46	56	M2646903
	48	58	M2647003
	50	60	M2647103
	52	62	M2647203
	XS	XS	M2646003
	S	S	M2646103
	M	M	M2646203
LADIES', YELLOW	L	L	M2646303
	2L	2L	M2646404
	38	48	M2640503
	40	50	M2640603
	42	52	M2640703
	44	54	M2640803
	46	56	M2640903
MEN'S, GREY	48	58	M2641003
	50	60	M2641103
	52	62	M2641203
	XS	XS	M2640003
	S	S	M2640103
	M	M	M2640203
	L	L	M2640303
LADIES', GREY	2L	2L	M2640404
	XS	XS	M2640003
	S	S	M2640103
	M	M	M2640203
	L	L	M2640303
	2L	2L	M2640404
	XS	XS	M2640003

MEN'S, RED	44	54	M2644803
	46	56	M2644903
	48	58	M2645003
	50	60	M2645103
	52	62	M2645203
	XS	XS	M2644003
	S	S	M2644103
LADIES', RED	M	M	M2644203
	L	L	M2644303
	2L	2L	M2644404
	38	48	M2640503
	40	50	M2640603
	42	52	M2640703
	44	54	M2640803
MEN'S, YELLOW	46	56	M2640903
	48	58	M2641003
	50	60	M2641103
	52	62	M2641203
	XS	XS	M2640003
	S	S	M2640103
	M	M	M2640203
LADIES', YELLOW	L	L	M2640303
	2L	2L	M2640404
	XS	XS	M2640003
	S	S	M2640103
	M	M	M2640203
	L	L	M2640303
	2L	2L	M2640404

MEN'S, RED	44	54	M2644803
	46	56	M2644903
	48	58	M2645003
	50	60	M2645103
	52	62	M2645203
	XS	XS	M2644003
	S	S	M2644103
LADIES', RED	M	M	M2644203
	L	L	M2644303
	2L	2L	M2644404
	38	48	M2640503
	40	50	M2640603
	42	52	M2640703
	44	54	M2640803
MEN'S, YELLOW	46	56	M2640903
	48	58	M2641003
	50	60	M2641103
	52	62	M2641203
	XS	XS	M2640003
	S	S	M2640103
	M	M	M2640203
LADIES', YELLOW	L	L	M2640303
	2L	2L	M2640404
	XS	XS	M2640003
	S	S	M2640103
	M	M	M2640203
	L	L	M2640303
	2L	2L	M2640404

- Waterproof, breathable and windproof
- Leather and Cordura® construction
- Water repellent outer fabric
- Double stitched impact seams
- 3M® night reflective piping – back
- Removable CE 95 protectors – shoulder and elbow
- Skin friendly collar
- Option to fit fleece neck warmer
- Waist connection zipper supplied
- Available in ladies' sizes



TriTech Jacket		
RANGE	SIZE	CODE
UNISEX, BLACK	XS	M2272001
	S	M2272101
	M	M2272201
	L	M2272301
	XL	M2272401
	XXL	M2272501
UNISEX, BLUE	XS	M2271001
	S	M2271101
	M	M2271201
	L	M2271301
	XL	M2271401
	XXL	M2271501
UNISEX, BEIGE	XS	M2270001

UNISEX, BEIGE	S	M2270101
	M	M2270201
	L	M2270301
	XL	M2270401
	XXL	M2270501

- Waterproof, breathable and windproof
- Water repellent outer fabric
- Removable CE 95 protectors – shoulder and elbow
- Removable multi-pocket reversible waistcoat
- 9 external pockets
- 3M® night reflective piping – chest, back and arms
- Waist connection zipper supplied
- Option to fit a fleece neck warmer



Raptor Vented Jacket			
RANGE	UK/ USA	EURO	CODE
UNISEX, BLACK	38	48	M2353802-N
	40	50	M2354002-N
	42	52	M2354202-N
	44	54	M2354402-N
	46	56	M2354602-N
	48	58	M2354802-N
	50	60	M2355002-N
	52	62	M2355202-N
	54	64	M2355402-N
	56	66	M2355602-N
UNISEX, GREY	38	48	M2363802-N
	40	50	M2364002-N
	42	52	M2364202-N
	44	54	M2364402-N
	46	56	M2364602-N

UNISEX, GREY	48	58	M2364802-N
	50	60	M2365002-N
	52	62	M2365202-N
	54	64	M2365402-N
	56	66	M2365602-N

- Fully perforated panels and Cordura® construction
- Removable CE 95 protectors – shoulder and elbow
- Removable dual density back insert
- Double stitched impact seams
- Four external pockets
- Sleeve width adjusters
- 3M® night reflective tape and piping – front and back sleeve
- Waist connection zipper supplied

Casual Paddock Jacket		
RANGE	SIZE	CODE
UNISEX, RED	XS	M2231001
	S	M2231101
	M	M2231201
	L	M2231301
	XL	M2231401
	XXL	M2231501
UNISEX, BLUE	XS	M2230001
	S	M2230101
	M	M2230201
	L	M2230301
	XL	M2230401
	XXL	M2230501
UNISEX, BLACK	XS	M2232001
	S	M2232101
	M	M2232201

UNISEX, BLACK	L	M2232301
	XL	M2232401
	XXL	M2232501

- Water repellent outer fabric
- Removable quilted lining
- 3M® night reflective material
- Skin friendly collar
- Waist connection zipper supplied



Waterproof Hudson Jacket			
RANGE	UK/ USA	EURO	CODE
MEN'S	38	48	M9213803
	40	50	M9214003
	42	52	M9214203
	44	54	M9214403
	46	56	M9214603
	48	58	M9214803
	50	60	M9215003
LADIES'	XS	XS	M9210003
	S	S	M9210103
	M	M	M9210203
	L	L	M9210303
	2L	2L	M9210403

- Waterproof, breathable and windproof
- Span Cordura® construction
- Water repellent outer fabric
- Double stitched impact seams
- Removable CE 95 protectors – shoulder and elbow
- Option to fit fleece neck warmer
- Waist connection zipper supplied
- Available in ladies' sizes

Waterproof Denim Jacket			
RANGE	UK/ USA	EURO	CODE
MEN'S	38	48	M2663803
	40	50	M2664003
	42	52	M2664203
	44	54	M2664403
	46	56	M2664603
	48	58	M2664803
	50	60	M2665003
LADIES'	XS	XS	M2660003
	S	S	M2660103
	M	M	M2660203
	L	L	M2660303
	2L	2L	M2660403

- Waterproof, breathable and windproof
- Water repellent Denim-Cordura® outer fabric
- Easily removable CE 95 protectors – knee
- 5 pocket styling
- Span Cordura® stretch kidney panel
- Double stitched impact seams
- Waist connection zipper supplied
- Available in ladies' sizes



Summit Jacket		
RANGE	SIZE	CODE
MEN'S, BLACK	S	M2342003
	M	M2342103
	L	M2342203
	XL	M2342303
	XXL	M2342403
MEN'S, BLUE	S	M2343003
	M	M2343103
	L	M2343203
	XL	M2343303
	XXL	M2343403

- Waterproof, breathable and windproof
- Lightweight water repellent outer fabric
- Easily removable CE 95 protectors – shoulder and elbow
- Removable dual density back insert
- 3M® night reflective piping – arms
- 6 outer pockets including hood/glove storage pocket
- Removable hood
- Removable aluminium liner
- Waist adjusters
- Option to fit fleece neck warmer
- Waist connection zipper supplied

Textile Vest		
RANGE	SIZE	CODE
MEN'S, BLACK	S	M2650003
	M	M2650103
	L	M2650203
	XL	M2650303
	XXL	M2650403
MEN'S, BEIGE	S	M2651003
	M	M2651103
	L	M2651203
	XL	M2651303
	XXL	M2651403

- Multi-pocket vest
- Lightweight outer fabric
- Fleece inner lining
- Elasticated side panels and adjuster straps

**Ladies' Summit Jacket**

RANGE	SIZE	CODE
LADIES', DARK BLUE	XS	M2340102
	S	M2340202
	M	M2340302
	L	M2340402
	2L	M2340502
LADIES', LIGHT BLUE	XS	M2341102
	S	M2341202
	M	M2341302
	L	M2341402
	2L	M2341502

- Waterproof, breathable and windproof
- Removable CE 95 protectors – shoulder and elbow
- Removable aluminium windproof liner
- 5 external pockets
- Skin friendly collar
- Removable hood
- Waist connection zipper supplied
- Option to fit fleece neck warmer

**Team Jacket**

RANGE	SIZE	CODE
UNISEX, BLACK/CREAM	XS	M9150096-P
	S	M9150196-P
	M	M9150296-P
	L	M9150396-P
	XL	M9150496-P
	XXL	M9150596-P
UNISEX, NAVY/CREAM	XS	M9150001-N
	S	M9150101-N
	M	M9150201-N
	L	M9150301-N
	XL	M9150401-N
	XXL	M9150501-N



UNISEX, GREEN/CREAM	XS	M9150095-H
	S	M9150195-H
	M	M9150295-H
	L	M9150395-H
	XL	M9150495-H
	XXL	M9150595-H

- Melton body
- Cowhide sleeves
- Quilted lining

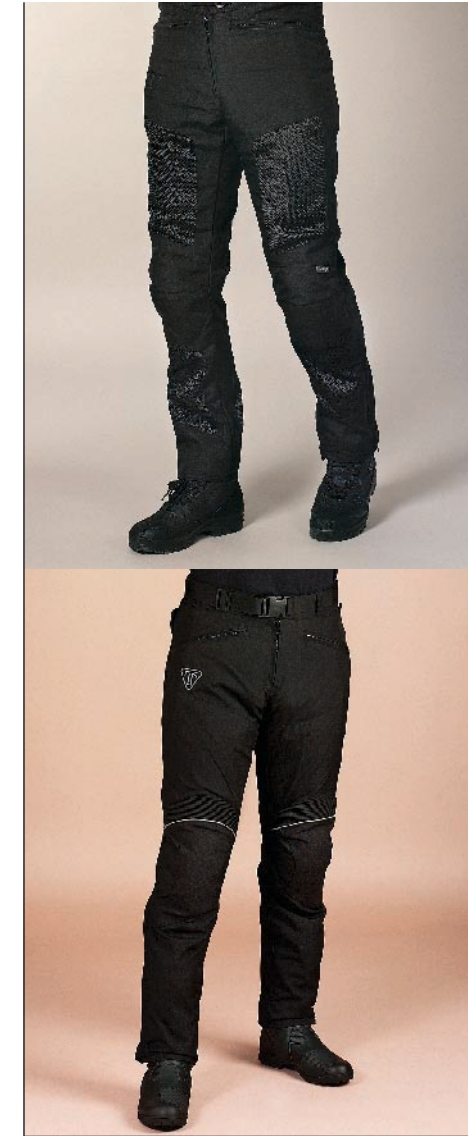
**Sympatex® Salopettes**

RANGE	SIZE	CODE
LADIES', BLACK	XS	M2102501
	S	M2102601
	M	M2102701
	L	M2102801
	2L	M2102901
MEN'S, BLACK	30	M2103001
	32	M2103201
	34	M2103401
	36	M2103601
	38	M2103801
	40	M2104001
	42	M2104201

- Waterproof, breathable and windproof
- Hiten® and leather water repellent outer fabric
- Removable quilted liner
- Removable CE 95 approved protectors – knee
- Leather covered impact panels – hip, knee and seat
- 3M® night reflectives
- Zip off bib
- 5 pockets
- Leg width adjusters
- Waist connection zipper supplied
- Available in ladies' sizes



Whatever you do stay dry.

**Raptor Vented Jeans**

RANGE	SIZE	CODE
MEN'S, BLACK	30	M2613002
	32	M2613202
	34	M2613402
	36	M2613602
	38	M2613802
	40	M2614002
	42	M2614202

- Cordura® construction
- Fully perforated mesh panels – thigh, shin and calf
- Removable CE 95 protectors – knee
- Double stitched impact seams
- Waist connection zipper supplied

Sympatex® Frontiers Pants 2

RANGE	SIZE	CODE
MEN'S, BLACK	30	M2693003
	32	M2693203
	34	M2693403
	36	M2693603
	38	M2693803
	40	M2694003
	42	M2694203

- Waterproof, breathable and windproof
- Cordura® water repellent outer fabric
- Easily removable CE 95 protectors – knee
- Hip padding
- Removable quilted liner
- Double stitched impact seams
- Keprotec® reinforced seat and knee sections
- Ankle to thigh zippers
- Adjustable belt
- Waist connection zipper supplied



5 Pocket Waterproof Jeans

RANGE	SIZE	CODE
MEN'S, SHORT, BLACK	30	M9200002
	32	M9200102
	34	M9200202
	36	M9200302
	38	M9200402
	40	M9200502
MEN'S, REGULAR, BLACK	42	M9200602
	30	M9201002
	32	M9201102
	34	M9201202
	36	M9201302
	38	M9201402
LADIES', BLACK	40	M9201502
	42	M9201602
	XS	M9202002
	S	M9202102
	M	M9202202
	L	M9202302
	2L	M9202402

- Waterproof, breathable and windproof
- Removable CE 95 protectors – knee
- Span Cordura® construction
- Two leg lengths in men's sizes
- Available in ladies' sizes



Tornado Jeans

RANGE	SIZE	CODE
UNISEX, BLACK	30	M9193002
	32	M9193202
	34	M9193402
	36	M9193602
	38	M9193802
	40	M9194002
	42	M9194202

- Waterproof, breathable and windproof
- Removable CE 95 protectors – knee
- Hitena® water repellent outer fabric
- Velcro attached knee sliders
- 3M® night reflective fabric and piping
- Hidden reinforced double layer seat and thigh
- Waist connection zipper supplied



LeatherTex Jeans

RANGE	SIZE	CODE
MEN'S, BLACK	30	M9963000
	32	M9963200
	34	M9963400
	36	M9963600
	38	M9963800
	40	M9964000
LADIES', BLACK	42	M9964200
	XS	M9960100
	S	M9960200
	M	M9960300
	L	M9960400

- Waterproof, breathable and windproof
- Leather and Cordura® construction
- Removable CE 95 protectors – knee
- Waist connection zipper supplied
- Available in ladies' sizes



Summit Jeans

RANGE	SIZE	CODE
MEN'S, BLACK	30	M2344003
	32	M2344103
	34	M2344203
	36	M2344303
	38	M2344403
	40	M2344503
MEN'S, BLUE	42	M2344603
	30	M2345003
	32	M2345103
	34	M2345203
	36	M2345303
	38	M2345403
	40	M2345503
	42	M2345603

- Waterproof, breathable and windproof
- Lightweight water repellent outer fabric
- Easily removable CE 95 approved protectors – knee
- 4 outer pockets
- Adjustable waist belt
- Reinforced seat area
- Ankle to knee length side zippers
- Waist connection zipper supplied



Waterproof Denim Jeans

RANGE	SIZE	CODE
MEN'S, DENIM	30	M2673003
	32	M2673203
	34	M2673403
	36	M2673603
	38	M2673803
	40	M2674003
LADIES', DENIM	42	M2674203
	XS	M2670003
	S	M2670103
	M	M2670203
	L	M2670303
	2L	M2670403

- Waterproof, breathable and windproof
- Water repellent Denim-Cordura® outer fabric
- Easily removable CE 95 protectors – knee
- Double stitched impact seams
- Waist connection zipper supplied



Explorer Pants 2

RANGE	SIZE	CODE
MEN'S, BLACK	30	M2683003
	32	M2683203
	34	M2683403
	36	M2683603
	38	M2683803
	40	M2684003
	42	M2684203

- Waterproof, breathable and windproof
- Lightweight water repellent outer fabric
- Easily removable CE 95 protectors – knee
- Hip padding
- Removable quilted liner
- Double stitched impact seams
- Keprotec® reinforced seat and knee sections
- Ankle to thigh zippers
- Adjustable belt
- Waist connection zipper supplied



Triumph Gloves & Boots.

Heavy-duty construction and human ergonomics combined, equals protection with comfort.



Hard Carbon Glove		
RANGE	SIZE	CODE
MEN'S, BLACK	XS	M9930100
	S	M9930200
	M	M9930300
	L	M9930400
	XL	M9930500
LADIES', BLACK	XXL	M9930600
	S	M9930700
	M	M9930800
	L	M9930900
<ul style="list-style-type: none">• Full knuckle carbon weave panel• Kepron[®] abrasion panels• Double leather impact panels• Raised wrist padding• 3M[®] night reflective piping• Ventilated finger sections• Available in ladies' sizes		



Sympatex [®] Sport Glove		
RANGE	SIZE	CODE
MEN'S, BLACK	XS	M9040102
	S	M9040202
	M	M9040302
	L	M9040402
	XL	M9040502
LADIES', BLACK	XXL	M9040602
	XS	M9040702
	S	M9040802
	M	M9040902
	L	M9041002
<ul style="list-style-type: none">• Waterproof, breathable and windproof• All leather construction• Hard carbon weave abrasion panels• Kepron[®] abrasion panels• Non-slip grip panels• Memory foam impact panels• 3M[®] night reflective tape and piping• Raised knuckle and wrist padding• Available in ladies' sizes		



Watch Glove		
RANGE	SIZE	CODE
MEN'S, BLACK	S	M2070300
	M	M2070400
	L	M2070500
	XL	M2070600
	XXL	M2070700
LADIES', BLACK	S	M2070000
	M	M2070100
	L	M2070200
<ul style="list-style-type: none">• Lightweight fabric and leather construction• Hard plastic knuckle guard• Ventilated knuckle panels• Non-slip grip panels• Kepron[®] abrasion panels• Clear watch panel• Available in ladies' sizes		



Raptor Vented Glove		
RANGE	SIZE	CODE
LADIES', BLACK	XS	M9580003
	S	M9580103
	M	M9580203
	L	M9580303
	XL	M9580403
MEN'S, BLACK	S	M9580503
	M	M9580603
	L	M9580703
	XL	M9580803
	XXL	M9580903
LADIES', GREY	XS	M9581003
	S	M9581103
	M	M9581203
MEN'S, GREY	L	M9581303
	XS	M9581403
	S	M9581503
	M	M9581603
	L	M9581703
	XL	M9581803
<ul style="list-style-type: none">• Perforated mesh fabric and leather construction• Ventilated hard knuckle panel• Slim-line sports cuff with adjuster• Kepron[®] reinforced palm section• Available in ladies' sizes		



Sympatex [®] Speedking Glove		
RANGE	SIZE	CODE
LADIES', BLACK	S	M9010003
	M	M9010103
	L	M9010203
MEN'S, BLACK	XS	M9010303
	S	M9010403
	M	M9010503
	L	M9010603
	XL	M9010703
LADIES', BLUE	XXL	M9010803
	S	M9011003
	M	M9011103
MEN'S, BLUE	L	M9011203
	XS	M9011303
	S	M9011403
	M	M9011503
	L	M9011603
LADIES', RED	XL	M9011703
	XXL	M9011803
	S	M9012003
	M	M9012103
	L	M9012203
MEN'S, RED	XS	M9012303
	S	M9012403
	M	M9012503
LADIES', YELLOW	L	M9012603
	XL	M9012703
	XXL	M9012803
	S	M9013003
	M	M9013103
MEN'S, YELLOW	L	M9013203
	XS	M9013303
	S	M9013403
	M	M9013503
	L	M9013603
LADIES', RED	XL	M9013703
	XXL	M9013803
<ul style="list-style-type: none">• Waterproof, breathable and windproof• Cordura[®] water repellent outer fabric• Hard carbon knuckle panel• Kepron[®] reinforced palm section		



Sympatex® All Leather Glove

RANGE	SIZE	CODE
UNISEX, BLACK	XS	M9760199
	S	M9760299
	M	M9760399
	L	M9760499
	XL	M9760599
	XXL	M9760699

- Waterproof, breathable and windproof
- All leather construction
- Keprotec® palm abrasion panels
- Double leather impact sections
- Raised knuckle pads
- Thinsulate® insulation

Highway Glove

RANGE	SIZE	CODE
MEN'S, BLACK	S	M9770499
	M	M9770599
	L	M9770699
	XL	M9770799
	XXL	M9770899
LADIES', BLACK	S	M9770199
	M	M9770299
	L	M9770399

- All leather construction
- Double leather palm section
- Keprotec® palm abrasion panels
- Ventilated finger sections
- Available in ladies' sizes

Perforated Highway Glove

RANGE	SIZE	CODE
MEN'S, BLACK	S	M9870400
	M	M9870500
	L	M9870600
	XL	M9870700
	XXL	M9870800
LADIES', BLACK	S	M9870100
	M	M9870200
	L	M9870300

- Perforated version of Highway Glove
- Available in ladies' sizes



Sympatex® Glove

RANGE	SIZE	CODE
MEN'S, BLACK	XS	M9020102
	S	M9020202
	M	M9020302
	L	M9020402
	XL	M9020502
	XXL	M9020602
LADIES', BLACK	XS	M9020702
	S	M9020802
	M	M9020902
	L	M9021002
MEN'S, BLUE	XS	M9021102
	S	M9021202
	M	M9021302
	L	M9021402
	XL	M9021502
	XXL	M9021602

LADIES', BLUE	XS	M9021702
	S	M9021802
	M	M9021902
	L	M9022002
MEN'S, RED	XS	M9022102
	S	M9022202
	M	M9022302
	L	M9022402
	XL	M9022502
	XXL	M9022602
LADIES', RED	XS	M9022702
	S	M9022802
	M	M9022902
	L	M9023002
MEN'S, YELLOW	XS	M9023102
	S	M9023202
	M	M9023302
	L	M9023402
	XL	M9023502
	XXL	M9023602
LADIES', YELLOW	XS	M9023702
	S	M9023802
	M	M9023902
	L	M9024002

- Waterproof, breathable and windproof
- Hitena® water repellent outer fabric
- Leather palm, finger and knuckle sections
- Keprotec® abrasion panels
- Non-slip grip panels
- Thinsulate® lining
- Visor wipe
- 3M® night reflective fabric and piping
- Raised knuckle pads
- Available in ladies' sizes



Explorer 2 Sympatex® Glove

SEX/COLOUR	SIZE	CODE
MEN'S, BLACK	XS	M9034102
	S	M9034202
	M	M9034302
	L	M9034402
	XL	M9034502
	XXL	M9034602
LADIES', BLACK	XS	M9034702
	S	M9034802
	M	M9034902
	L	M9035002
MEN'S, BLUE	XS	M9035102
	S	M9035202
	M	M9035302
	L	M9035402
	XL	M9035502
	XXL	M9035602

LADIES', BLUE	XS	M9035702
	S	M9035802
	M	M9035902
	L	M9036002
MEN'S, RED	XS	M9036102
	S	M9036202
	M	M9036302
	L	M9036402
	XL	M9036502
	XXL	M9036602
LADIES', RED	XS	M9036702
	S	M9036802
	M	M9036902
	L	M9037002
MEN'S, YELLOW	XS	M9037102
	S	M9037202
	M	M9037302
	L	M9037402
	XL	M9037502
	XXL	M9037602
LADIES', YELLOW	XS	M9037702
	S	M9037802
	M	M9037902
	L	M9038002

- Waterproof, breathable and windproof
- Lightweight water repellent outer fabric
- Leather palm, finger and knuckle sections
- Keprotec® abrasion panels
- 3M® night reflective fabric and piping
- Raised knuckle pads
- Available in ladies' sizes





Expedition Boot

RANGE	UK	USA	EURO	CODE
LADIES', BLACK	4	5	37	M2620003
	5	6	38	M2620103
	6	7	39	M2620203
MEN'S, BLACK	6	7	40	M2620303
	7	8	41	M2620403
	8	9	42	M2620503
	9	10	43	M2620603
	10	11	44	M2620703
	11	12	45	M2620803
	12	13	46	M2620903

- Waterproof, breathable and windproof
- Full leather construction
- Ankle, heel and shin guards
- Fully adjustable hidden lace-up construction
- Calf width adjuster
- 3M® reflective panel – heel
- Non-slip rubber sole
- Available in ladies' sizes



Cruiser Boot

RANGE	UK	USA	EURO	CODE
LADIES', BLACK	4	5	37	M9053702
	5	6	38	M9053802
	6	7	39	M9053902
MEN'S, BLACK	6	7	40	M9054002
	7	8	41	M9054102
	8	9	42	M9054202
	9	10	43	M9054302
	10	11	44	M9054402
	11	12	45	M9054502
	12	13	46	M9054602
	13	14	47	M9054702

- Waterproof, breathable and windproof
- Leather upper construction
- Heel and gear change reinforcement
- Non-slip rubber sole
- Available in ladies' sizes



Touring Boot

RANGE	UK	USA	EURO	CODE
LADIES', BLACK	4	5	37	M9903700
	5	6	38	M9903800
	6	7	39	M9903900
MEN'S, BLACK	6	7	40	M9904000
	7	8	41	M9904100
	8	9	42	M9904200
	9	10	43	M9904300
	10	11	44	M9904400
	11	12	45	M9904500
	12	13	46	M9904600

- Waterproof, breathable and windproof
- Leather upper construction
- 3M® night reflective panel
- Heel and gear change protectors
- Ankle and shin guards
- Available in ladies' sizes



Explorer Boot

RANGE	UK	USA	EURO	CODE
LADIES', BLACK	4	5	37	M9623799
	5	6	38	M9623899
	6	7	39	M9623999
MEN'S, BLACK	6	7	40	M9624099
	7	8	41	M9624199
	8	9	42	M9624299
	9	10	43	M9624399
	10	11	44	M9624499
	11	12	45	M9624599
	12	13	46	M9624699

- Waterproof, breathable and windproof
- Cordura® and leather upper
- Ankle, heel and shin guards
- Keoprotec® abrasion panels
- 3M® night reflective heel area
- Available in ladies' sizes



TriTech Boot

RANGE	UK	USA	EURO	CODE
LADIES', BLACK	4	5	37	M2263701
	5	6	38	M2263801
	6	7	39	M2263901
MEN'S, BLACK	6	7	40	M2264001
	7	8	41	M2264101
	8	9	42	M2264201
	9	10	43	M2264301
	10	11	44	M2264401
	11	12	45	M2264501
	12	13	46	M2264601

- Waterproof, breathable and windproof
- Leather and textile construction
- Ankle guards
- Heel and gear change protectors
- 3M® night reflective panels
- Non-slip sole
- Available in ladies' sizes



Honest, original and authentic personal accessories. Triumph style – wherever you go, take it with you.



1. Holdall BLACK M9330202 <ul style="list-style-type: none">• 60 litre capacity• High density nylon• 3M® night reflectives• Multi-pocket design	3. Raptor Vented Backpack BLACK M9342303 <ul style="list-style-type: none">• Fully perforated mesh fabric• Fully perforated back panel• Heavy duty base fabric• 3M® night reflective piping	4. Backpack BLACK M9330002 <ul style="list-style-type: none">• 22 litre capacity• High density nylon• 3M® night reflectives• Multi-pocket design	5. Large Backpack BLACK M9330102 <ul style="list-style-type: none">• 28 litre capacity• High density nylon• 3M® night reflectives• Multi-pocket design
2. Bumbag BLACK M9330302 <ul style="list-style-type: none">• High density nylon• 3M® night reflectives• Multi-pocket design			



1. Large Roller Gear Bag BLACK M9342201 <ul style="list-style-type: none">• Cordura® water repellent outer fabric• 72 litre capacity• Retractable handle	3. Helmet Backpack BLACK M9341300 <ul style="list-style-type: none">• Nylon bumbag• Foldout helmet compartment	1. Waterproof Backpack BLACK M9342001 <ul style="list-style-type: none">• Cordura® water repellent outer fabric• Multi-pocket design• Waterproof internal compartment• 3M® night reflective tape and badge• Waistband fastener• 16 litre capacity	3. Techno Rucksack BLACK M9340099 <ul style="list-style-type: none">• Cordura® water repellent outer fabric• Waistband fastener• 20 litre capacity
2. Roller Gear Bag BLACK M9342101 <ul style="list-style-type: none">• Cordura® water repellent outer fabric• 48 litre capacity• Suitable for cabin luggage• Retractable handle	4. X-Pack BLACK/GREY M9330402 <ul style="list-style-type: none">• 10.5 litre capacity• Nylon fabric• 3M® night reflectives• Multi-pocket design with phone pocket	2. Large Techno Rucksack BLACK M9341000 <ul style="list-style-type: none">• Cordura® water repellent outer fabric• Helmet carrying facility• Waistband fastener• 23 litre capacity	4. Techno Bumbag BLACK M9341200 <ul style="list-style-type: none">• Compact storage bag• Waistband connection
		5. Laptop Backpack BLACK M9340903 <ul style="list-style-type: none">• Cordura® water repellent outer fabric• Water resistant laptop compartment• Waistband fastener• Dual density back insert• 20 litre capacity	



Leather Luggage	
RANGE	CODE
1. LEATHER CARD WALLET	M9380503
2. LEATHER NOTE/COIN WALLET	M9380403
Neon Clock	
RANGE	CODE
NEON CLOCK 20" BLUE/WHITE	M9400397
<ul style="list-style-type: none">• 20 inch diameter• Neon tube surround, glass face• Metal casing• Mains powered	
Other Clocks	
RANGE	CODE
1. WALL CLOCK	M9400503
2. DESK CLOCK	M9400403
3. LARGE WALL CLOCK	M9400603
Key Fobs	
RANGE	CODE
1. KEY FOB TRIANGULAR	M9460095
2. KEY FOB CIRCULAR	M9460100
3. KEY FOB 4-SIDED	M9470095
4. KEY FOB OVAL	M9460000
Mugs	
RANGE	CODE
1. RETRO MUG, NAVY	M2180703
2. FLAMES LOGO MUG, WHITE	M2180803
3. FLAG LOGO MUG, BLACK	M2180903
4. LOGO, BLACK	M2180100
5. LOGO, WHITE	M2180300
6. LOGO, GREEN	M2180200
12 PIECE LOGO, BLACK	M2180400
12 PIECE LOGO, GREEN	M2180500
12 PIECE LOGO, WHITE	M2180600
Umbrellas	
RANGE	CODE
1. LOGO, GREEN/CREAM	M2080200
2. LOGO, BLUE/WHITE	M2080100
Ashtray	
RANGE	CODE
LOGO ASHTRAY, BLACK	M2181003



Sticker Set	
RANGE	CODE
1. FACTORY STICKER SET 2	M9110102
2. FACTORY STICKER SET	M9110002
3. WINDOW DECAL SET	M9111002

Beach Towel	
RANGE	CODE
BEACH TOWEL, BLUE	M9360003

Mouse Mat	
RANGE	CODE
TRIUMPH LOGO MOUSE MAT	M9120001
• 300mm x 215mm	

Bufs	
RANGE	CODE
1. CLASSIC BUFF 1	M9430003
2. SPORTS BUFF 1	M9430203
3. CLASSIC BUFF 2	M9430103
4. SPORTS BUFF 2	M9430303
5. POLAR BUFF	M9430403

Sympatex® Socks		
RANGE	SIZE	CODE
UNISEX, GREY	37/38	M9350003
	39/40	M9350103
	41/42	M9350203
	43/44	M9350303
	45/46	M9350403
<ul style="list-style-type: none">• Windproof and breathable• Lightweight durable construction• Added support features• High insulation capabilities• Quick drying• Moisture transportation system• Micro-fibre properties for continuous freshness		
Silk Scarf		
RANGE	CODE	
SILK SCARF, CREAM/BLUE	M9370003	



Belt, Buckle and Cufflink Set	
	M9500303
Belt with Buckle	
	M9500403



Cufflinks		
RANGE		CODE
UNION FLAG CUFFLINKS		M9500103
BLUE LOGO CUFFLINKS		M9500003
Cigar Holder Set		
	M9500203	



Lighters		
RANGE		CODE
LIGHTER 1		M9440000-N4
LIGHTER 2		M9440000-N6
LIGHTER 3		M9440000-N9
LIGHTER 4		M9440000-M8
LIGHTER 5		M9440000-M3
LIGHTER 6		M9440000-M12
LIGHTER 7		M9440000-S8
LIGHTER 8		M9440000-S9
LIGHTER 9, (RETRO)		M9440003-RT



Buckles		
RANGE		CODE
1. TRIUMPH RETRO LOGO BUCKLE		M9281003
2. TRIUMPH EYEBROW BUCKLE		M9280796
3. TRIUMPH TANK BADGE BUCKLE		M9280696
4. BONNEVILLE BUCKLE		M9280900
5. TRIUMPH RECT. FULL BUCKLE		M9280596
6. TRIUMPH OVAL BUCKLE		M9280296
7. TRIUMPH RECT. CUT OUT BUCKLE		M9280496
8. THUNDERBIRD OVAL BUCKLE		M9280396

Jeans Belt		
RANGE	SIZE	CODE
BLACK	S	M9290096
	M	M9290196
	L	M9290296
	XL	M9290396



Scale Models		
RANGE		CODE
1. SPEED TRIPLE MODEL GREEN 1:12		M2000702
2. SPEED TRIPLE MODEL BLACK 1:12		M2000802
3. SPRINT RS MODEL YELLOW 1:12		M2000502
4. SPRINT RS MODEL ORANGE 1:12		M2000602
5. DAYTONA MODEL BLUE 1:12		M2000402
6. DAYTONA MODEL SILVER 1:12		M2000302
7. TT600 MODEL 2002 BLUE 1:18		M2001803
8. TROPHY MODEL 2002 PLATINUM 1:18		M2001903
9. SPRINT ST MODEL RED 1:18		M2001702
10. BONNEVILLE T100 MODEL RED 1:18		M2001602
11. BONNEVILLE MODEL BLUE 1:18		M2001502
12. BONNEVILLE T120 MODEL RED 1:18		M2001100
13. TIGER MODEL YELLOW 1:18		M2000200
14. TIGER MODEL BLUE 1:18		M2000100
15. SPEED TRIPLE MODEL GREEN 1:18		M2000700
16. SPEED TRIPLE MODEL BLACK 1:18		M2000800
17. SPRINT RS MODEL ORANGE 1:18		M2000600
18. SPRINT RS MODEL BLUE 1:18		M2000500
19. TT600 MODEL YELLOW 1:18		M2001400
20. DAYTONA MODEL SILVER 1:18		M2000300
21. DAYTONA MODEL YELLOW 1:18		M2000400
22. THUNDERBIRD MODEL GREEN 1:18		M2000900
23. THUNDERBIRD MODEL RED 1:18		M2001000
24. BONNEVILLE T120 1959 MODEL 1:12		M2001202
TT600 MODEL BLUE 1:18		M2001300
MODEL KIT 18 PC 34341 1:18		M2000000

- 1:18 scale models are available for: Thunderbird, Tiger, Sprint RS, Daytona, Speed Triple, T120 Bonneville, TT600, Sprint ST, Bonneville
- 1:12 scale models are available for: Sprint RS, Speed Triple, Daytona
- 1:12 scale die-cast model available for: T120 Bonneville

Patches		
RANGE		CODE
TRIUMPH PATCH		M9480095
TRIANGULAR PATCH GREEN		M9480198
TRIANGULAR PATCH BLACK		M9480298
UNION FLAG PATCH		M9480398

Hangers		
RANGE		CODE
COAT-HANGER		M8890002
TROUSER-HANGER		M8890102
SHIRT-HANGER		M8890203

Pewter Pins		
RANGE		CODE
TRIUMPH PEWTER PIN OVAL		M9451397
TRIUMPH PEWTER PIN RECT.		M9451497
T'BIRD PEWTER PIN BADGE OVAL		M9451547
SPRINT PEWTER PIN OVAL		M9452099
DAYTONA PEWTER PIN OVAL		M9452199
TIGER PEWTER PIN OVAL		M9452299
BONNEVILLE PEWTER PIN RECT.		M9280900

Protector		
RANGE		CODE
L & K PROTECTOR SET (2 PC)		M2250001
DUAL DENSITY BACK INSERT		M2250101
KNOX PROTECTOR SET (2PC)		M2250202

Fleece Neck Warmer		
	M2030000	



Watches		
RANGE		CODE
1. 3009-01 3 HAND DATE		M9410602
2. 3009-02 3 HAND DATE		M9410702
3. 3001-11 3 HAND DATE		M9410802
4. 3001-33 3 HAND DATE		M9410902
5. 3005-02 CHRONOGRAPH		M9411002
6. 3005-03 CHRONOGRAPH		M9411102
7. 3010-02 CHRONOGRAPH		M9411202
8. 3003-03 SWISS CHRONO		M9411302
9. 3002-11 CHRONOGRAPH		M9411402
10. 3008-11 CHRONOGRAPH		M9411502
11. 3007-11 CHRONOGRAPH		M9411602



Baseball Caps and Hats	
RANGE	CODE
1. GREEN	M9390095-H
2. BLACK	M9390095-P
3. BLACK/GREY	M9390100
4. BLACK/YELLOW	M9390200
5. LOGO/BLACK	M9390502
6. UNION FLAG BLACK	M8880198
7. WASHED GREEN	M8880298
8. WASHED BEIGE	M8880398



9. SANDWICH BLACK	M8880498
10. FLAMES RED/BLACK	M8880598
11. LOGO CAP 2 BLACK/RED/WHITE	M9390603
12. LOGO CAP 3 NAVY/BLUE/WHITE	M9390703
13. RETRO CAP 1 NAVY STRIP	M9390803
14. RETRO CAP 2 DARK BLUE	M9390903
15. BEANIE HAT, NAVY	M8800003

Men's Jacket Sizes:						
UK	EURO	US	INT	CHEST cm/in	WAIST cm/in	
34	44	34	XS	79-84/31-33	69-74/27-29	
36	46	36	XS	84-89/33-35	74-79/29-31	
38	48	38	S	89-94/35-37	79-84/31-33	
40	50	40	S	94-99/37-39	84-89/33-35	
42	52	42	M	99-104/39-41	89-94/35-37	
44	54	44	M	104-109/41-43	94-99/37-39	
46	56	46	L	109-114/43-45	99-104/39-41	
48	58	48	L	114-119/45-47	104-109/41-43	
50	60	50	XL	119-124/47-49	109-114/43-45	
52	62	52	XL	124-129/49-51	114-119/45-47	
54	64	54	XXL	129-134/51-53	119-124/47-49	
56	66	56	XXL	134-139/53-55	124-129/49-51	

Men's Jeans Sizes:							
UK	EURO	US	INT	WAIST cm/in	HIPS cm/in	INSEAM-S cm/in	INSEAM-R cm/in
30	40	30	XS	74-79/29-31	96-100/38-39	76/30	86/34
32	42	32	S	79-84/31-33	100-104/39-41	77/30	87/34
34	44	34	M	84-89/33-35	104-108/41-42	78/31	88/35
36	46	36	L	89-94/35-37	108-112/42-44	79/31	89/35
38	48	38	XL	94-99/37-39	112-116/44-45	80/31	90/35
40	50	40	XXL	99-104/39-41	116-120/45-47	81/32	91/36
42	52	42	XXXL	104-109/41-43	120-124/47-48	82/32	92/36

Ladies' Jacket Sizes:						
UK	EURO	US	INT	BUST cm/in	WAIST cm/in	
XS	10	38	8	XS	85-90/33-35	65-70/25-27
S	12	40	10	S	90-95/35-37	70-75/27-29
M	14	42	12	M	95-100/37-39	75-80/29-31
L	16	44	14	L	100-105/39-41	80-85/31-33
2L	18	46	16	2L	105-110/41-43	85-90/33-35

Ladies' Jeans Sizes:							
	UK	EURO	US	INT	WAIST cm/in	HIPS cm/in	INSEAM cm/in
XS	10	38	8	XS	65-70/25-27	95-100/37-39	75-80/29
S	12	40	10	S	70-75/27-29	100-105/39-41	76-81.5/30
M	14	42	12	M	75-80/29-31	105-110/41-43	77-83/31
L	16	44	14	L	80-85/31-33	110-115/43-45	78-84.5/32
2L	18	46	16	2L	85-90/33-35	115-120/45-47	79-86/33

Boot Sizes:			
	UK	EURO	US
LADIES'	4	37	5
	5	38	6
	6	39	7
MEN'S	6	40	7
	7	41	8
	8	42	9
	9	43	10
	10	44	11
	11	45	12
	12	46	13
	13	47	14

Size chart is only a guide. Sizes of some products may vary due to style and cut of garments. Please visit your Triumph dealer.